

HYDRAULIC PILOT CONTROL VALVES



Jv 10

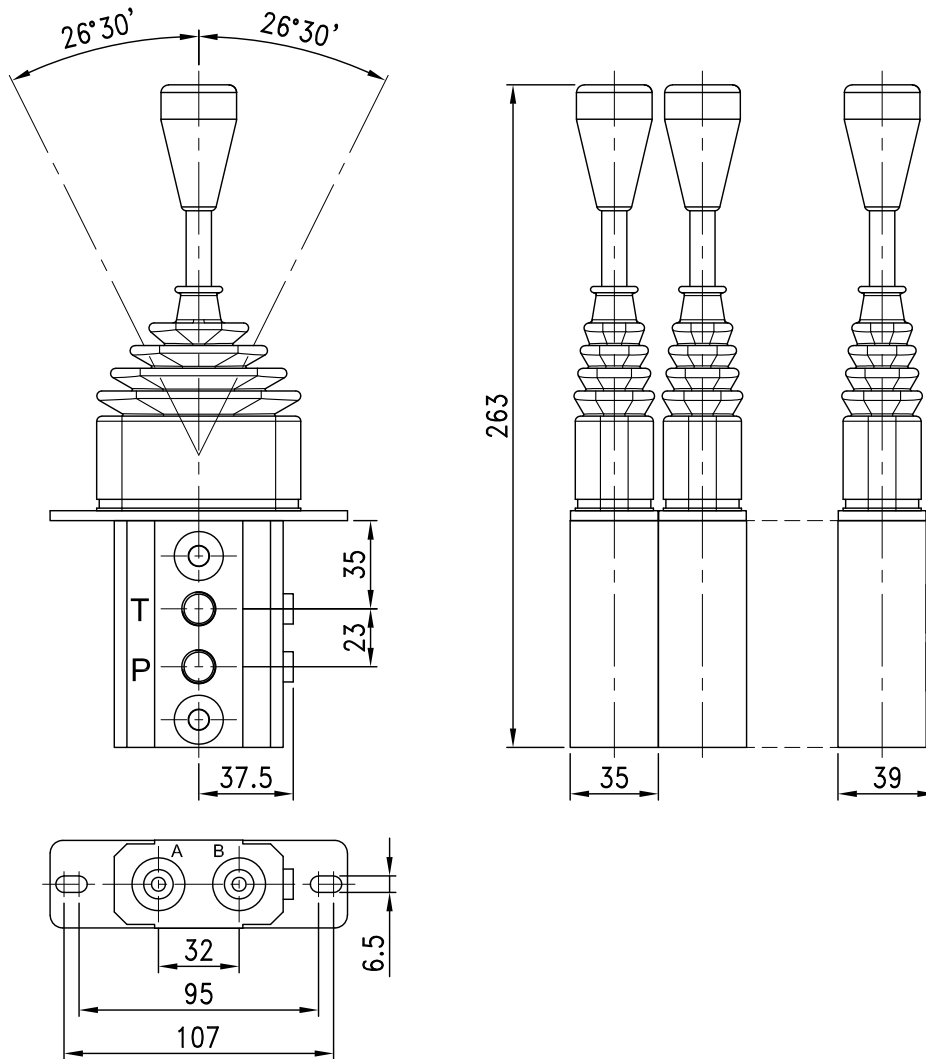
B HYDRAULIC PRODUCT

SYSTEM OF FLUID POWER

Hydraulic pilot control valves

JV-10

DIMENSIONS



unit : mm

PERFORMANCE

Nominal flow rating : 25 l/min

Operating pressure (Max.) : parallel circuit : 100 bar

Back pressure (Max.) : 3 bar (on outlet port T)

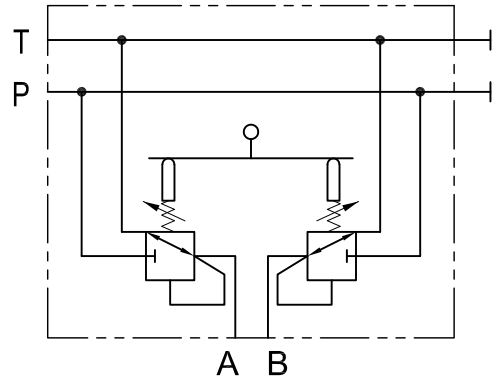
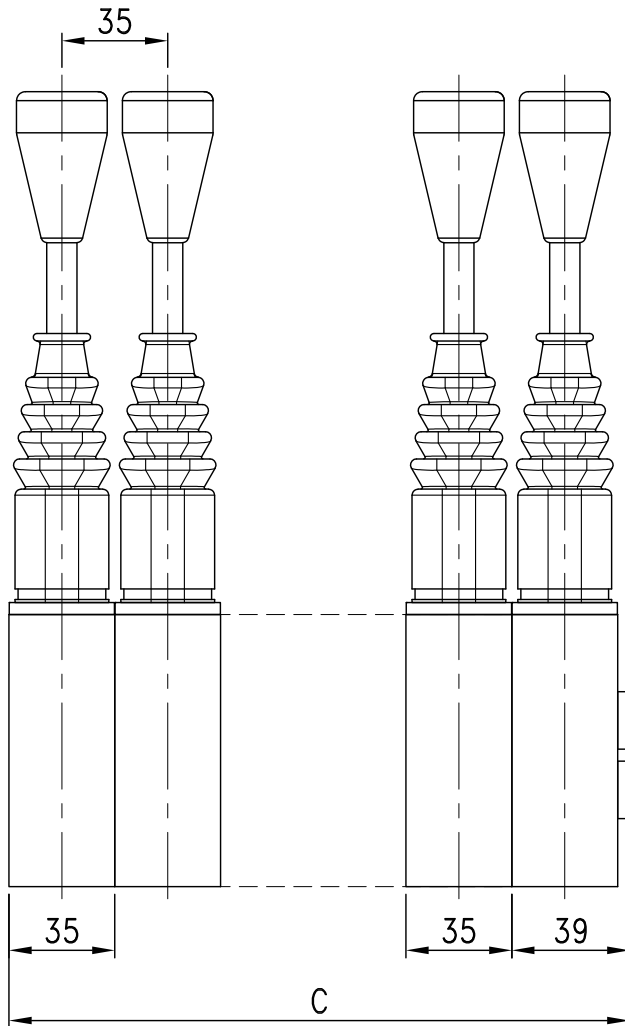
Oil leaks from A (B) to T : 0.9 c.c/min at 30 bar (435 psi)

Fluid : best use mineral oil with viscosity ranging between 15 to 75 mm²/s

Fluid temperature : Min. -10°C , Max. 80°C

JV-10

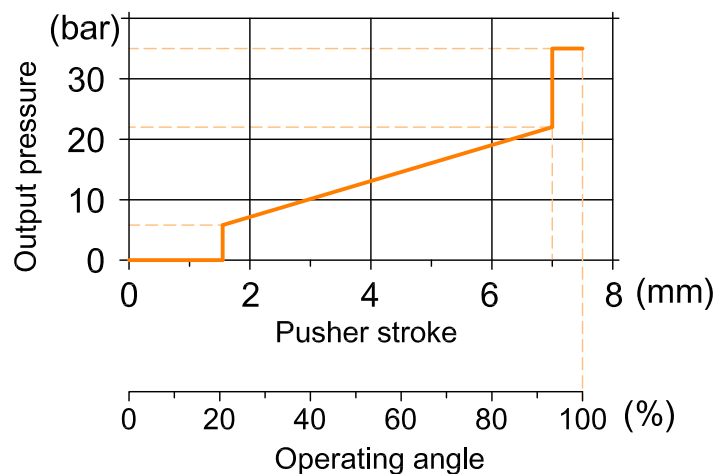
BODY SECTIONS



Type	Dimensions
	C
JV-10/1	39
JV-10/2	74
JV-10/3	109
JV-10/4	144
JV-10/5	179
JV-10/6	214
JV-10/7	249
JV-10/8	284
JV-10/9	319
JV-10/10	354

unit : mm

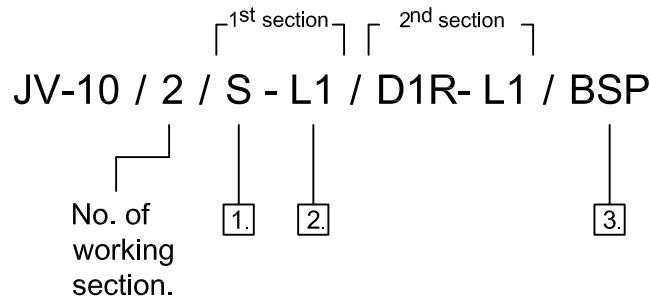
Control curves





JV-10

ORDERING CODE NUMBER EXAMPLE



1.Control options page.04

3.Port threads option page.05

Type	Description
S	Spring return to neutral.
D1R	Spring return to neutral. Left side with detent plate.
D2R	Spring return to neutral. Right side with detent plate.
D12R	Spring return to neutral. Both sides with detent plates.

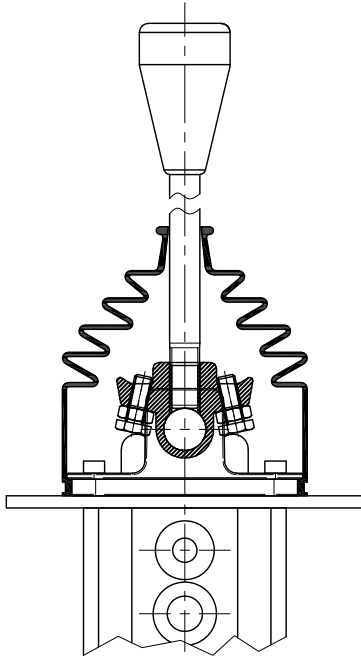
Type	Description
BSP	G
SAE	UN - UNF

2.Handlever options page.05

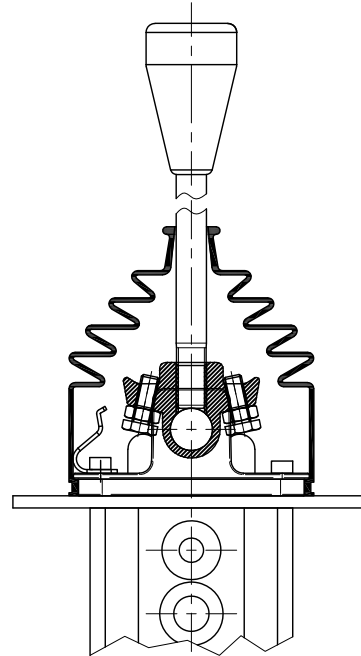
Type	Description
L1	Standard handlevers

JV-10

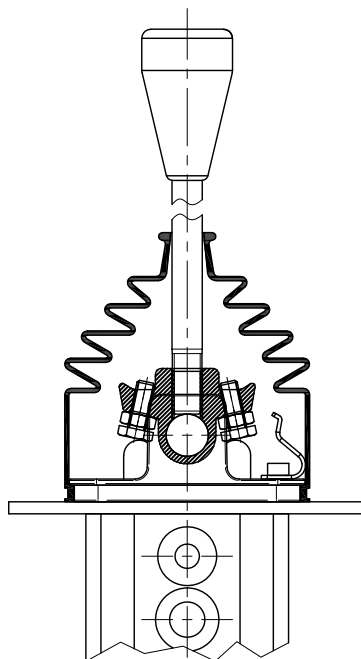
1. Control options



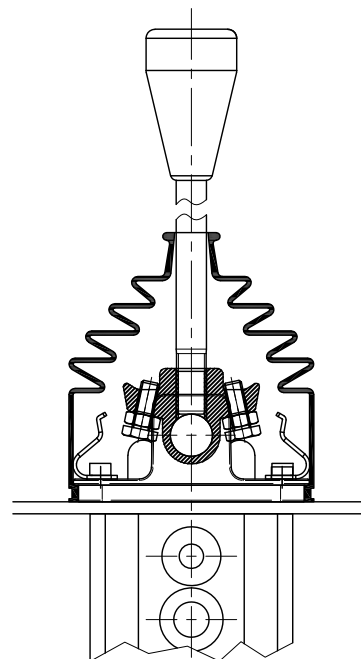
S : Spring return to neutral.



D1R : Spring return to neutral.
Left side with detent plate.



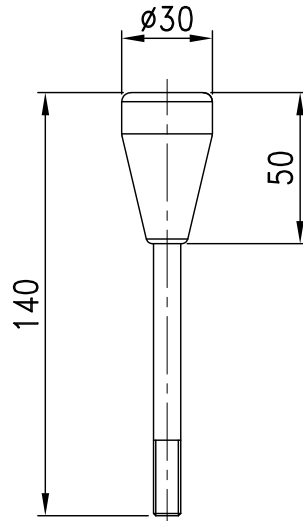
D2R : Spring return to neutral.
Right side with detent plate.



D12R : Spring return to neutral.
Both sides with detent plates.

JV-10

2. Handlever options



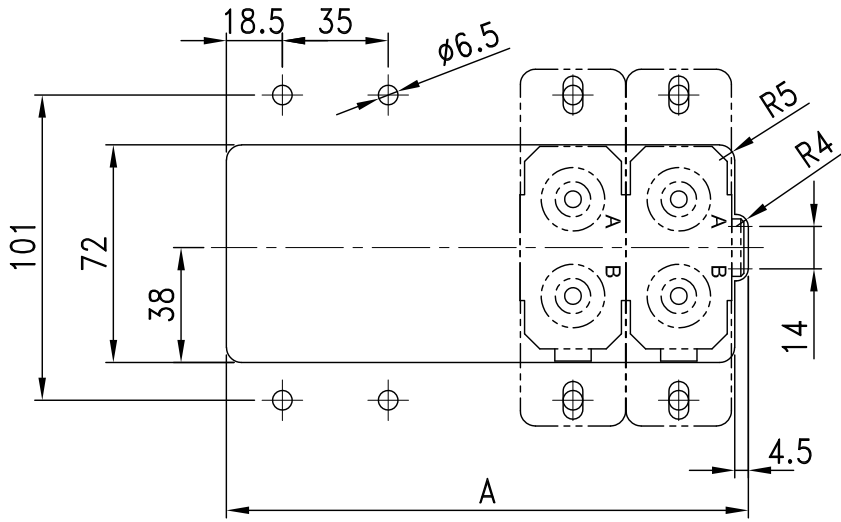
3. Port threads option

Port threads

PORT	BSP	SAE
P	G1/4	7/16-20UNF
A and B port	G1/4	7/16-20UNF
T	G1/4	7/16-20UNF

JV-10

PANEL DIMENSION



Type	Dimensions
	A
JV-10/1	41.5
JV-10/2	76.5
JV-10/3	111.5
JV-10/4	146.5
JV-10/5	181.5
JV-10/6	216.5
JV-10/7	251.5
JV-10/8	286.5
JV-10/9	321.5
JV-10/10	356.5