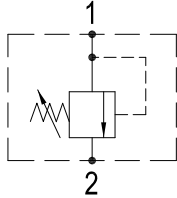


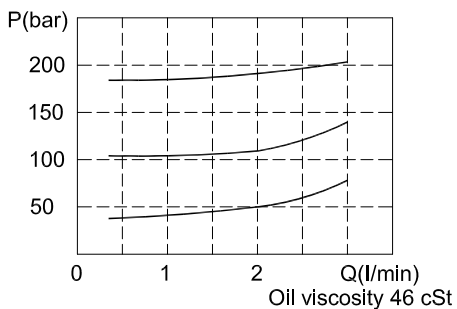
## PRESSURE RELIEF VALVES IR-08S

### HYDRAULIC DIAGRAM

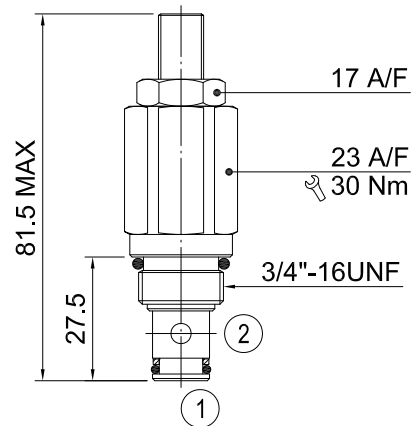


Type	Qnom (L/min)	Pmax (Bar)
IR-08S	1.2	350

### RATING DIAGRAM



### DIMENSIONS (mm)



Cavities: see cavity data 08-02

### CODE NUMBER

**IR-08S-01-L**

#### Opening Pressure

- 1) 01 = 10-100 BAR. Std setting 50 BAR
  - 2) 02 = 35-200 BAR. Std setting 100 BAR
  - 3) 03 = 50-350 BAR. Std setting 150 BAR
- (Std setting can be customised as requested. @6.8L/min)

#### Manual Adjustment

(See Line Body Ordering)  
Omit for standard cartridge valves

### ■ APPLICATION

The IR-08S is ideally suited for use as a pilot valve or a thermal relief, whereas the IR-08S is an economical solution for small flow systems where a fast response is required.

### ■ OPERATION

The adjustable spring-loaded cone is shifted at valve setting by pressure on port 1 allowing relief flow to port 2. Reverse flow, port 2 to port 1 is blocked. Back pressure on port 2 adds to the valve setting.

### ■ PERFORMANCE

Rated Flow: 1.2 l/min Max. Pressure: 350 bar  
Working temperature:  
Min. -20°C, Max. 90°C, with standard BUNAN gaskets  
Min. -20°C, Max. 120°C, with optional VITON gaskets on request

### ■ RECOMMENDATIONS

**Fluid:** best use mineral oil with viscosity ranging between 10 and 200 cSt  
**Filter:** 25 micron or better  
**Cavities:** see cavity data 08-02  
**Installation:** before screwing the cartridge on the valve body, ascertain to provide suitable gasket lubrication with clean oil and also be sure to screw the cartridge manually in to reach against the gaskets in the valve body.

H B HYDRAULICS CO., LTD. reserves the variations and modifications of technical features and dimensions; and also reserves the right to stop production of each and any model listed in the catalogue with no notice.